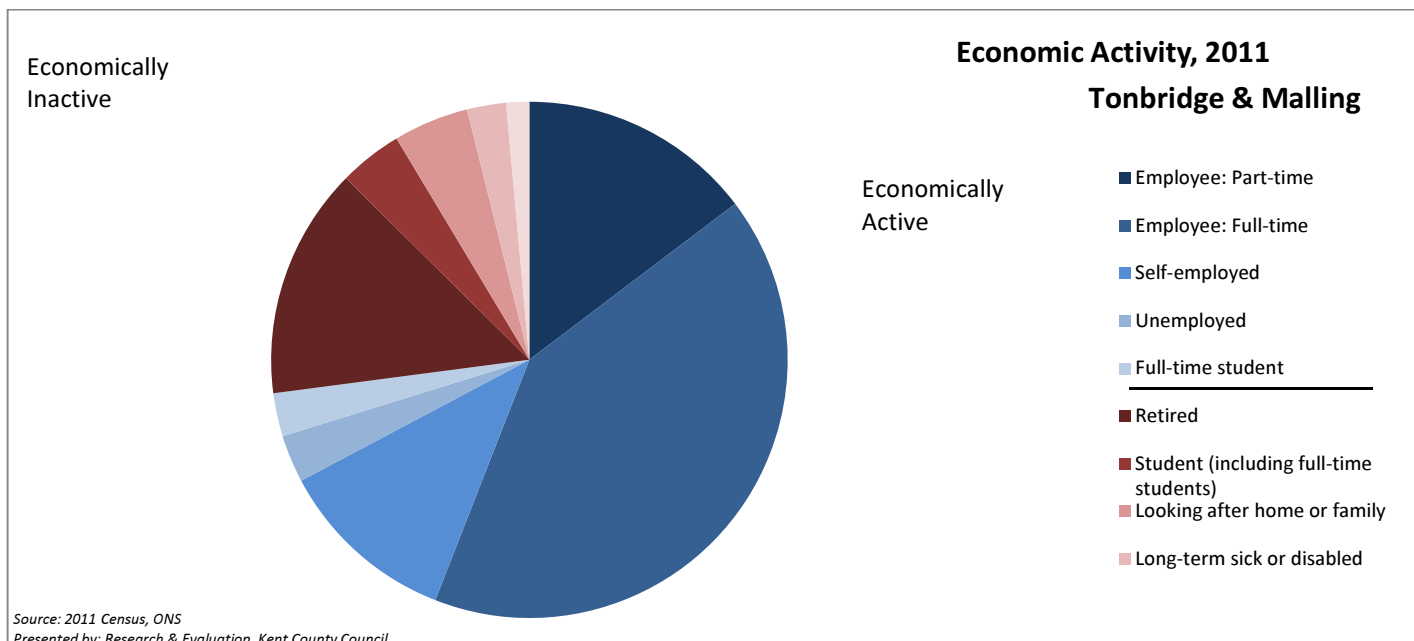


Economic Profile – Tonbridge and Malling

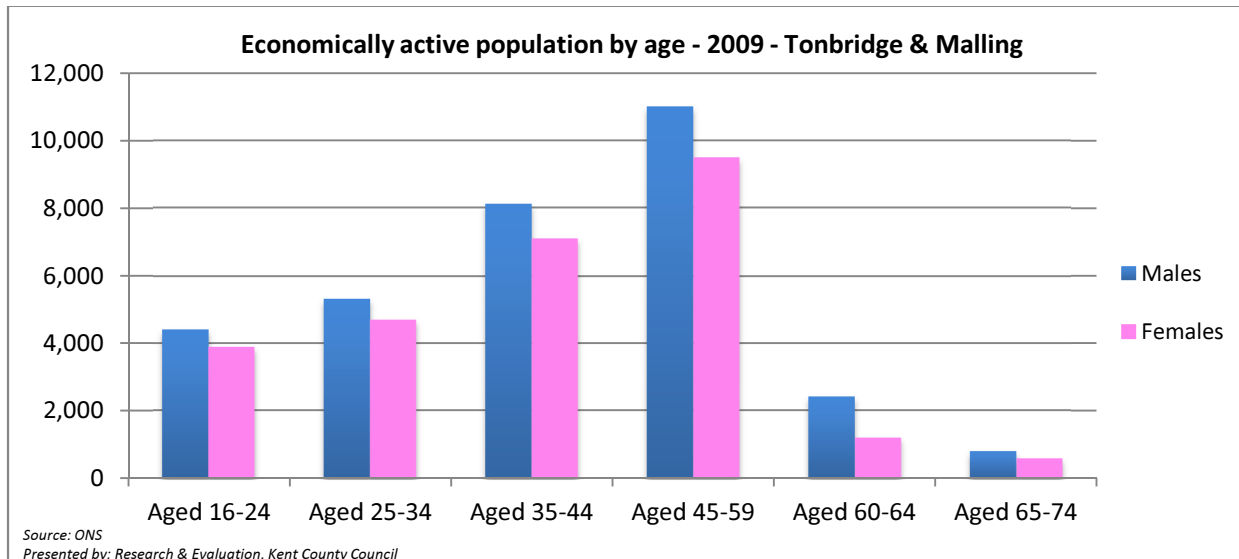
ANNEX A



Economic Activity

Source: 2011 Census Table KS601EW

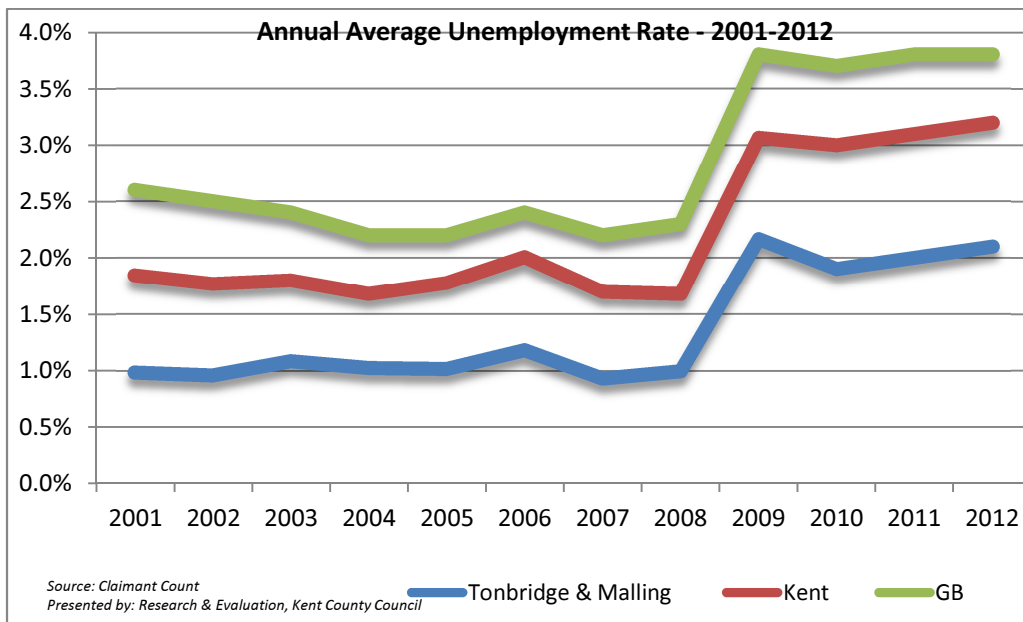
Tonbridge & Malling	Number	% of all people 16-74
Aged 16-74	86,435	100%
Economically Active	63,039	72.9%
Employee: Part-time	12,690	14.7%
Employee: Full-time	35,663	41.3%
Self-employed	9,768	11.3%
Unemployed	2,580	3.0%
Full-time student	2,338	2.7%
Economically Inactive	23,396	27.1%



Economically active population by age

Source: Kent County Council, Research & Evaluation

2009	Tonbridge & Malling		
	Males	Females	Total
Aged 16-24	4,400	3,900	8,300
Aged 25-34	5,300	4,700	9,900
Aged 35-44	8,100	7,100	15,300
Aged 45-59	11,000	9,500	20,500
Aged 60-64	2,400	1,200	3,500
Aged 65-74	800	600	1,400
Aged 16-74	32,000	27,000	58,900



Annual Average Unemployment Rate - 2001-2012

Source: NOMIS - Claimant Count

	Tonbridge & Malling	Kent	GB
2001	1.0%	1.8%	2.6%
2002	1.0%	1.8%	2.5%
2003	1.1%	1.8%	2.4%
2004	1.0%	1.7%	2.2%
2005	1.0%	1.8%	2.2%
2006	1.2%	2.0%	2.4%
2007	0.9%	1.7%	2.2%
2008	1.0%	1.7%	2.3%
2009	2.2%	3.1%	3.8%
2010	1.9%	3.0%	3.7%
2011	2.0%	3.1%	3.8%
2012	2.1%	3.2%	3.8%

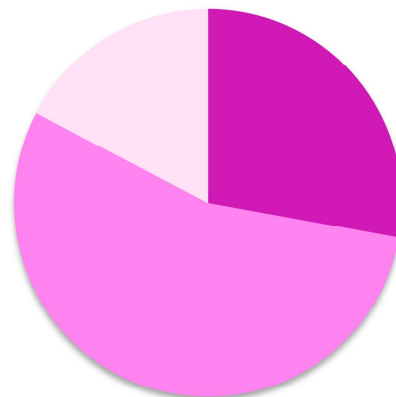
Annual average unemployment by age and gender, 2012 (% of unemployed)

% of unemployed males



■ 24 and under ■ 25-49 ■ 50-64

% of unemployed females



■ 24 and under ■ 25-49 ■ 50-64

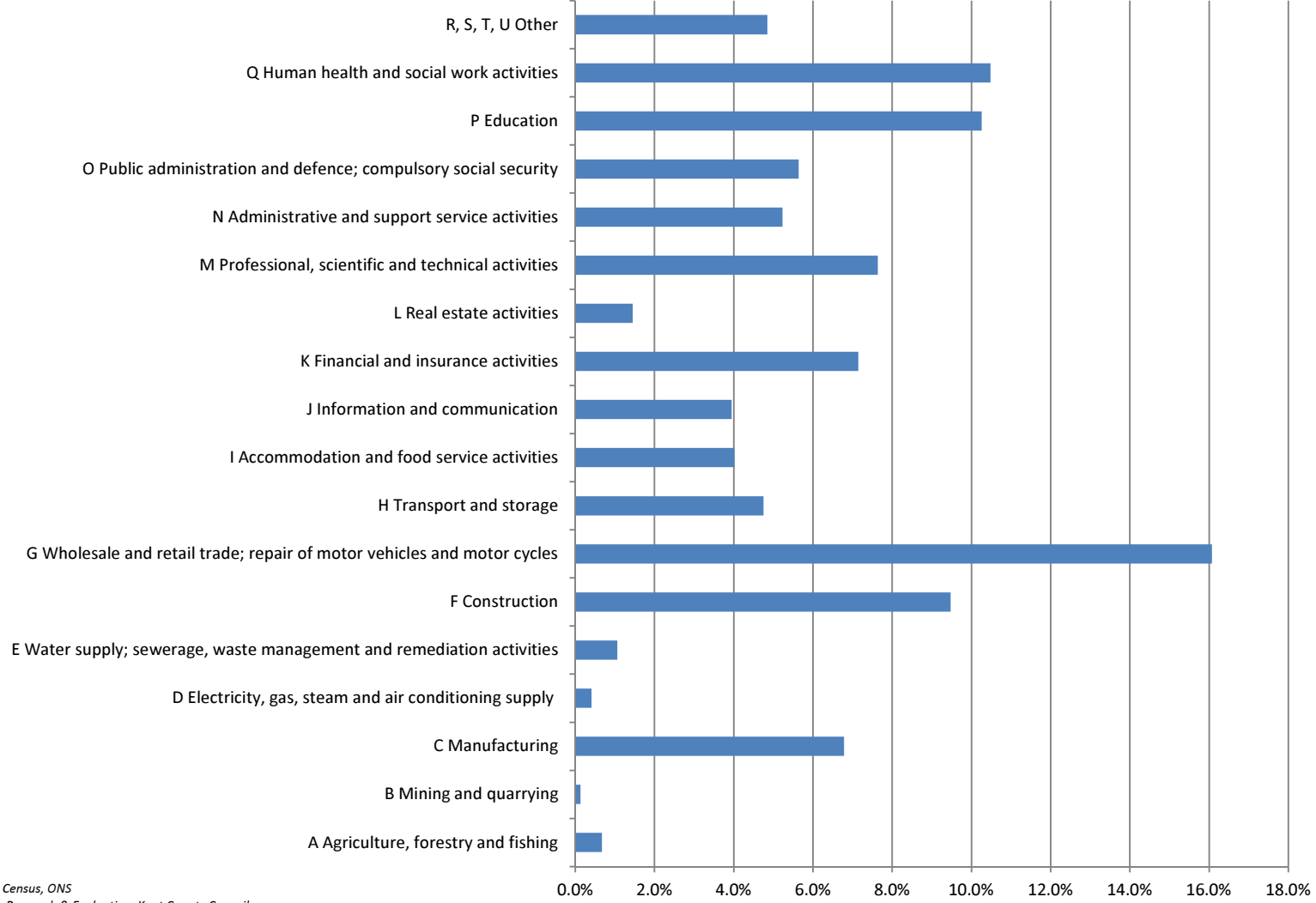
Annual average unemployment by age and gender, 2012 (% of unemployed)

Source: NOMIS - Claimant Count

Tonbridge & Malling	Males		Females		Total	
24 and under	290	27.6%	145	28.0%	435	27.7%
25-49	550	52.3%	285	55.0%	835	53.2%
50-64	205	19.5%	90	17.4%	300	19.1%
16-64	1,051	100.0%	518	100.0%	1,569	100.0%

Employment by Industry 2011

Tonbridge & Malling



Source: 2011 Census, ONS

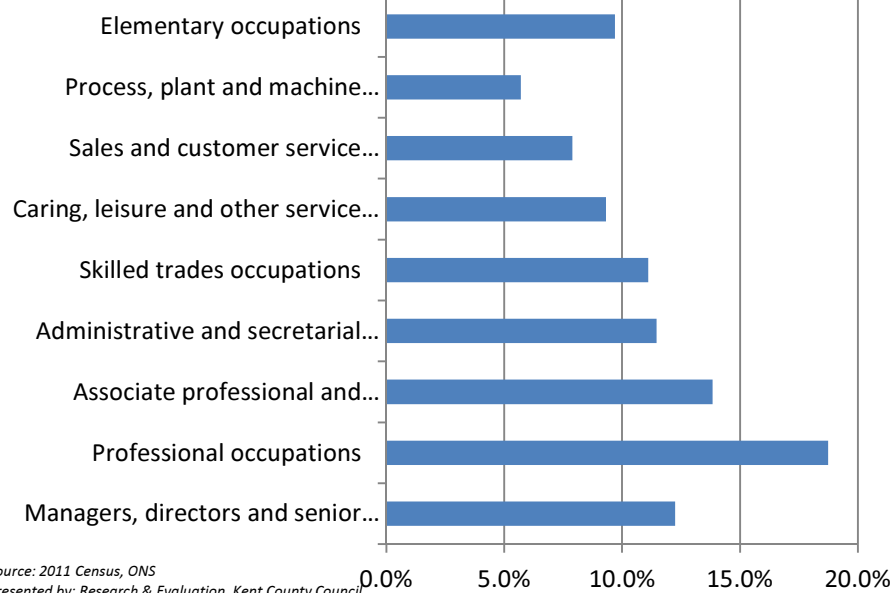
Presented by: Research & Evaluation, Kent County Council

Employment by Industry 2011

Source: 2011 Census Table KS605EW

Tonbridge & Malling	Number	% of all people 16-74 in employment
All Industries	59,993	100%
A Agriculture, forestry and fishing	402	0.7%
B Mining and quarrying	77	0.1%
C Manufacturing	4,070	6.8%
D Electricity, gas, steam and air conditioning supply	247	0.4%
E Water supply; sewerage, waste management and remediation activities	635	1.1%
F Construction	5,685	9.5%
G Wholesale and retail trade; repair of motor vehicles and motor cycles	9,643	16.1%
H Transport and storage	2,850	4.8%
I Accommodation and food service activities	2,408	4.0%
J Information and communication	2,367	3.9%
K Financial and insurance activities	4,286	7.1%
L Real estate activities	871	1.5%
M Professional, scientific and technical activities	4,581	7.6%
N Administrative and support service activities	3,137	5.2%
O Public administration and defence; compulsory social security	3,384	5.6%
P Education	6,153	10.3%
Q Human health and social work activities	6,288	10.5%
R, S, T, U Other	2,909	4.8%

Employment by Occupation, 2011 Tonbridge & Malling

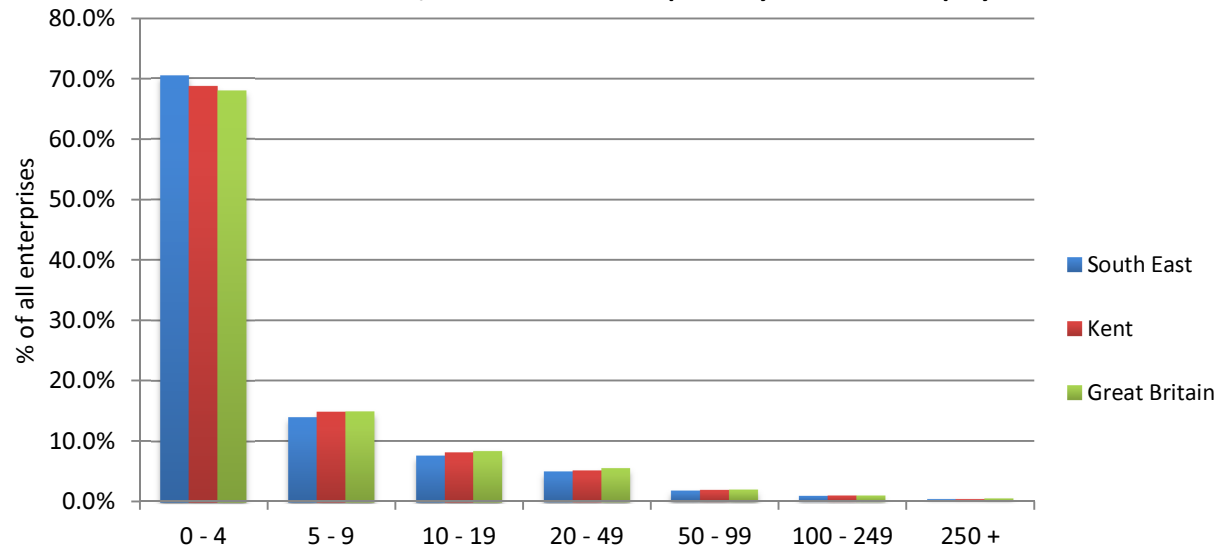


Employment by Occupation, 2011

Source: 2011 Census Table KS608EW

Tonbridge & Malling	Number	% of all people 16-74 in employment
All Occupations	59,993	100%
Managers, directors, senior officials	7,768	12.9%
Professional occupations	10,283	17.1%
Associate professional and technical	8,380	14.0%
Administrative and secretarial	7,652	12.8%
Skilled trades occupations	6,798	11.3%
Caring, leisure and other service	5,229	8.7%
Sales and customer service	4,530	7.6%
Process, plant and machine	3,544	5.9%
Elementary occupations	5,809	9.7%

VAT and/or PAYE based enterprises by number of employees - 2012



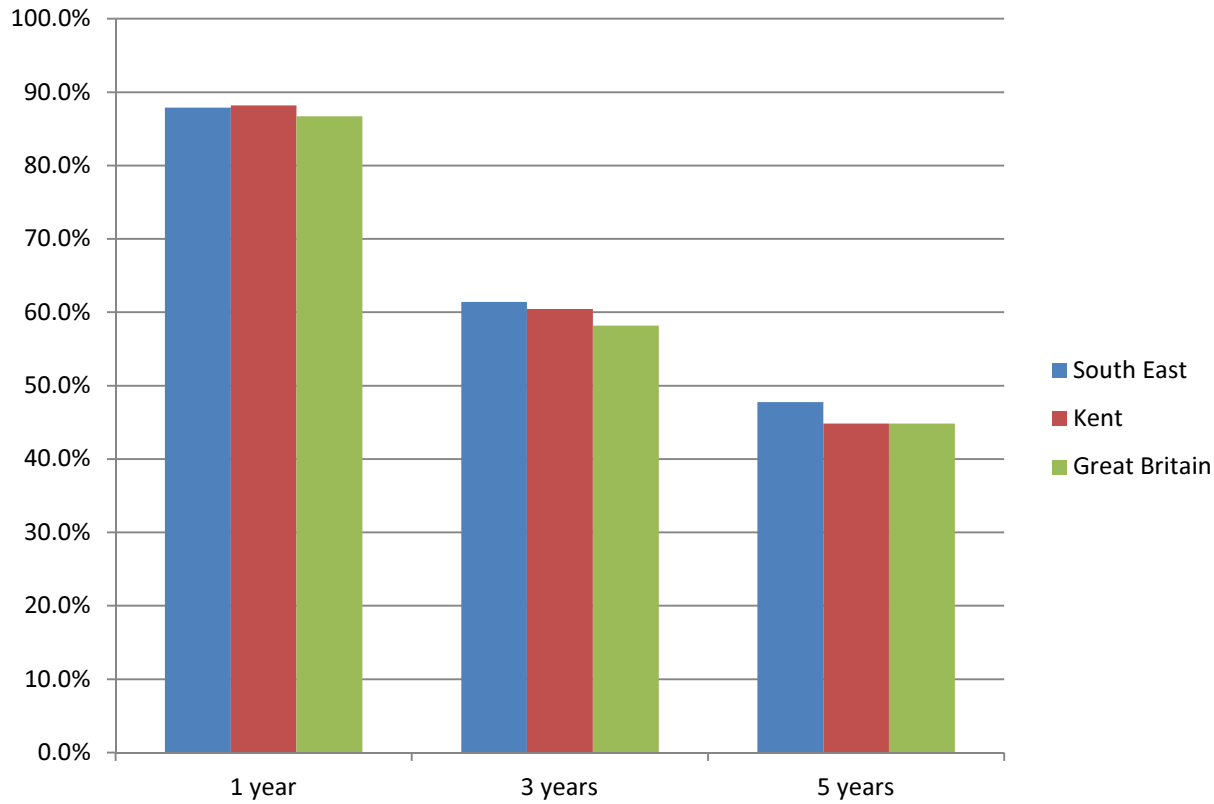
Source: ONS UK Business Survey
Presented by: Research & Evaluation, Kent County Council

VAT and/or PAYE based enterprises by number of employees - 2012

Source: UK Business Survey, ONS

2012	Tonbridge & Malling	Kent	Great Britain
0 - 4	3,790	41,705	1,718,140
5 - 9	775	8,995	376,245
10 - 19	480	4,955	211,085
20 - 49	320	3,090	137,050
50 - 99	115	1,115	48,205
100 - 249	60	590	25,545
250 +	25	205	11,390
TOTAL	5,565	60,655	2,527,660

Business survival rates, 2011



Source: UK Business Demography, ONS
Presented by: Research & Evaluation, Kent County Council

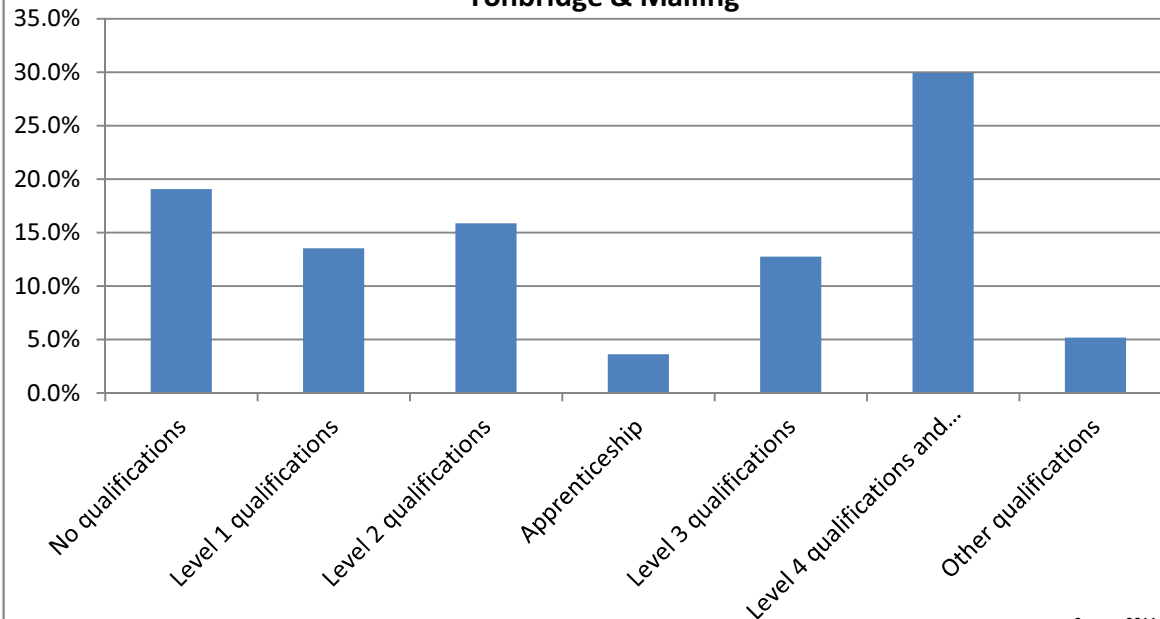
Business Survival Rates

Source: Uk Business Demography, ONS

2011	Tonbridge & Malling		Kent		Great Britain	
	Number	%	Number	%	Number	%
1 year	435	88.8%	4,745	88.2%	199,955	86.7%
3 years	380	65.0%	3,730	60.5%	152,350	58.2%
5 years	265	48.2%	2,810	44.9%	112,135	44.9%

Highest level of Qualification (resident population aged 16+), 2011

Tonbridge & Malling



Source: 2011 Census, ONS
Presented by: Research & Evaluation, Kent County Council

Highest level of Qualification (resident population aged 16+), 2011

Source: 2011 Census Table KS501EW

Tonbridge & Malling	Number	% of all people 16+	South East %
Population aged 16+	95,821	100%	
No qualifications	19,135	20.0%	19.1%
Level 1 qualifications	14,401	15.0%	13.5%
Level 2 qualifications	16,945	17.7%	15.9%
Apprenticeship	3,874	4.0%	3.6%
Level 3 qualifications	11,646	12.2%	12.8%
Level 4 qualifications and above	25,967	27.1%	29.9%
Other qualifications	3,853	4.0%	5.2%